



# Warblington School

## Newsletter

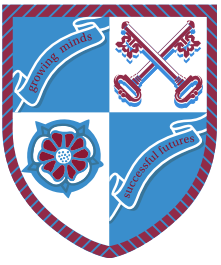
*Issue 20.12.2024*

### Christmas 2024 Edition

As we prepare for the Christmas break, it's been another eventful week with highlights including the school play, House pride activities, and more.

Friday, the 20th will be a shorter day, and so is this newsletter edition!

Wishing you all a wonderful holiday season—see you in 2025!

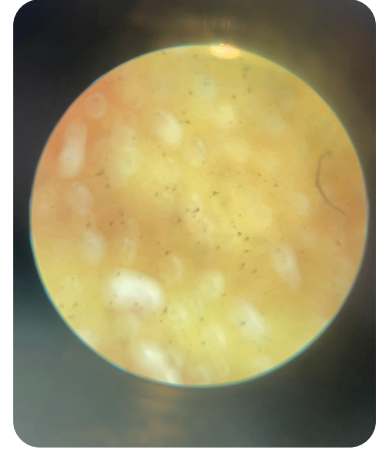
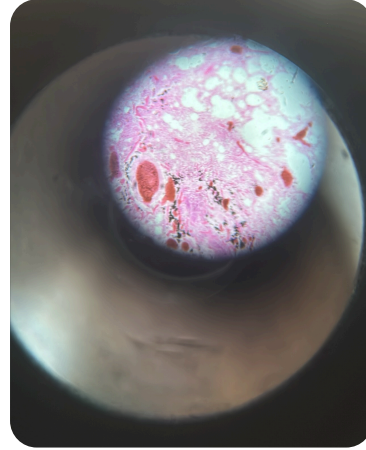


Follow Us!



## Exploring the Microscopic World

Year 7 students have been learning to use microscopes in science, exploring tissues and cells up close. A fascinating introduction to the wonders of biology!

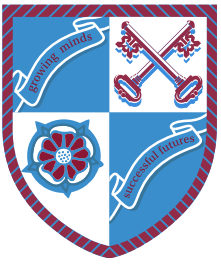


## Lifelab at Southampton General Hospital

8H1 had an amazing day at Lifelab! They performed health checks, extracted their own DNA, and explored epigenetics using electrophoresis. Students also met three scientists—a microbiologist, an anesthetist, and a medical statistician—learning about their vital work.







Follow Us!



## Paxton longest paper chains

This year Paxton competed to see which tutor group could make the longest paper-chain.

And the winner is 8PX! Honourable mention to 10PA as runner up. It was brilliant to see everyone this morning, and the chains will be used to decorate the hall for Christmas dinner!

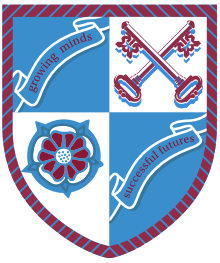


## Christmas Final Year Assembly

Here is the final year assembly before the Christmas break! Everyone is getting involved in the demonstration.

Have a good Christmas and a happy New Year, everyone!





Follow Us!



## Loot Boxes in Video Games

Gaming is a popular way for young people to socialize, but in-game purchases like loot boxes can create peer pressure to spend money for advantages or exclusive items. Often likened to gambling, loot boxes involve paying for a chance to win desired rewards, raising concerns about fostering gambling behaviors.

A BBC investigation found that most top games on the Google Play Store fail to disclose loot boxes, leaving parents in the dark about their presence. Transparency is vital for ensuring games are appropriate for children.

As we approach the festive season, many students may receive new devices as gifts. This is an excellent time to ensure these devices are set up with appropriate parental controls and monitoring tools. By doing so, you can help your child navigate the digital world safely while fostering healthy gaming and online habits. Take the time to review settings, enable filters, and discuss responsible usage with your child. A little preparation now can make a big difference later.

Here are some helpful links to set up parental controls on popular devices:

- Apple Devices (iPhone, iPad): <https://support.apple.com/en-us/HT201304>
- Android Devices: <https://support.google.com/googleplay/answer/1075738>
- Windows PCs: <https://support.microsoft.com/en-us/account-billing/set-up-family-features-on-windows-10-1d124365-7e34-7ae9-c316-d2ff0a7f6c06>
- PlayStation Consoles: <https://www.playstation.com/en-us/support/account/parental-controls/>
- Xbox Consoles: <https://support.xbox.com/en-US/help/family-online-safety/child-accounts/configure-child-account-settings>
- Nintendo Switch: <https://www.nintendo.com/switch/parental-controls/>

