



What is revision?

Teachers constantly tell students to revise but don't always tell or show them how! I am going to reveal to you **the most effective study strategy** and then we will look at some different ways to use it.

1. Self-quizzing
2. Brain Dumps/Knowledge Splats
3. Flashcards

Stepping up to grab the keys to unlock your success



1. Self-Quizzing

- This is a little bit like spelling where you look-cover-write-check.
- Let's read the information below: (this is stage one: look)

Revision is the process of 'looking again': studying information that has been studied before. The most effective way to do this is through retrieval which means getting all the information you can remember out of your head and there are a variety of ways you can do this. It can be written or verbal but the most effective way is when you have no cues to help you!

- Stage 2 :Write what you can remember
- Stage 3: Check the missing details

Stepping up to grab the keys to unlock your success

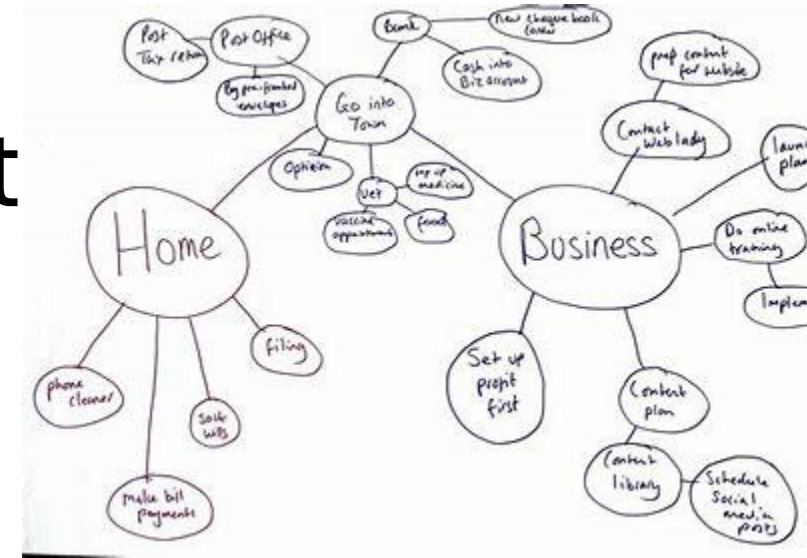
2. Brain Dumps/Knowledge Splat

You might want to use the following headings:

- What revision is
- How to revise
- Why to revise

Check with you rpartner

Check with the information

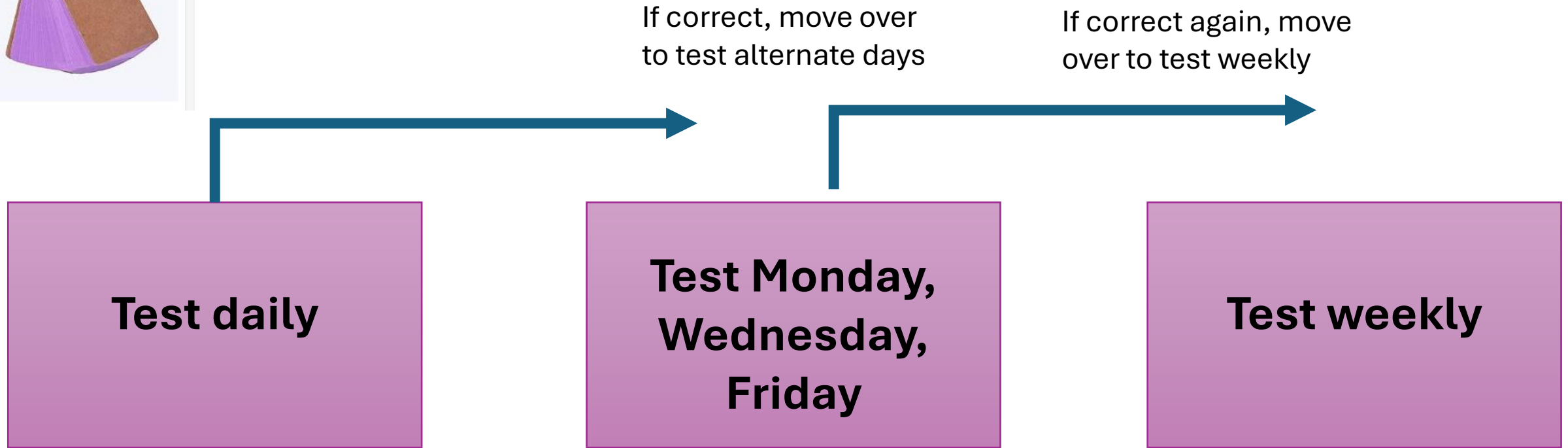


Connect it

Stepping up to grab the keys to unlock your success

Leitner method:

3. Flashcards



If correct, move over to test alternate days

If correct again, move over to test weekly

Test daily

**Test Monday,
Wednesday,
Friday**

Test weekly

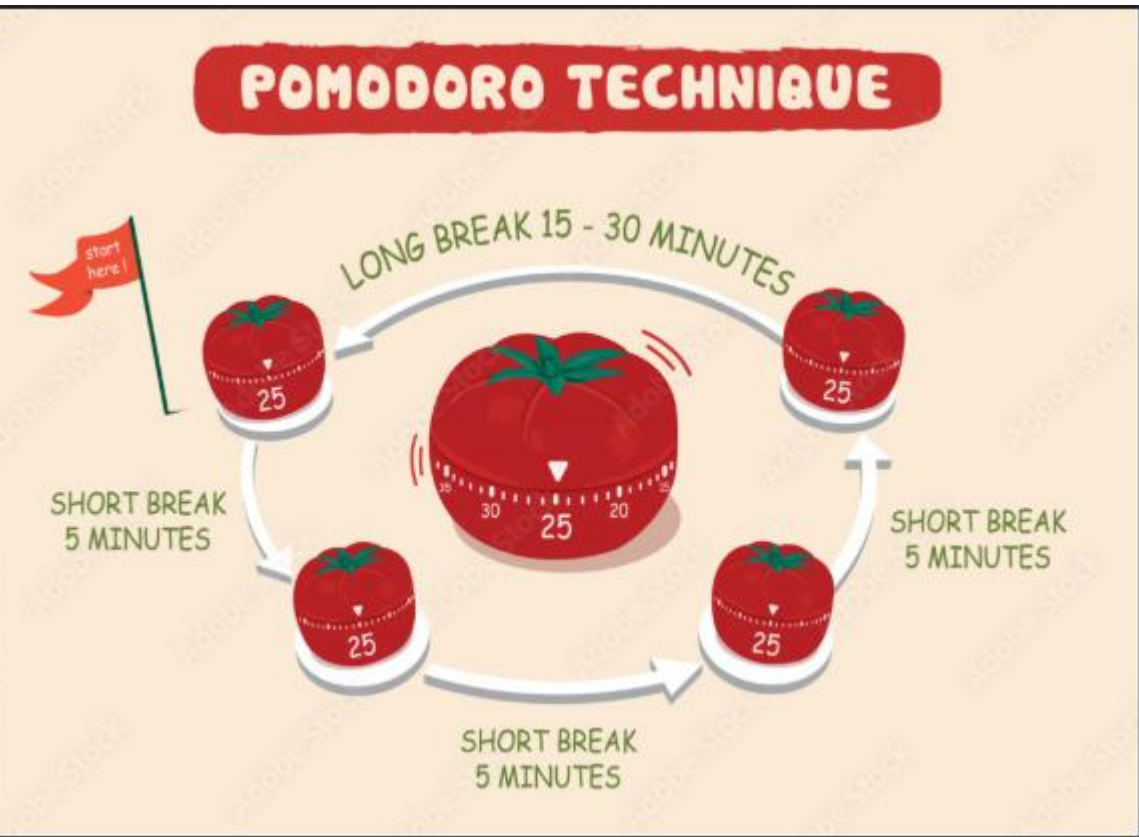


stepping up to grab the keys to unlock your success

If incorrect, move back to test daily

If incorrect, move back to test daily

Establish a Routine

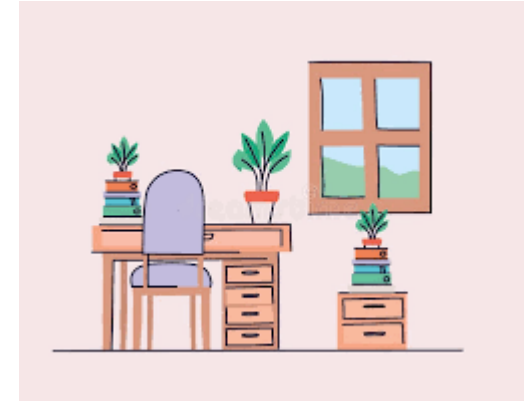
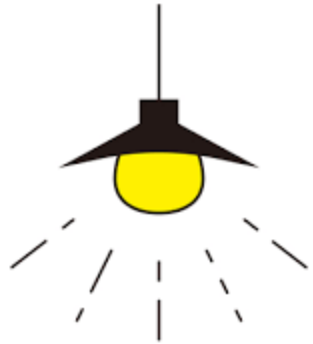


WEEKLY REVISION PLANNER

TIME	MONDAY	TUESDAY	WEDNESDAY	THURSDAY	FRIDAY	TIME	SATURDAY	SUNDAY
8:30AM - 4PM	SCHOOL	SCHOOL	SCHOOL	SCHOOL	SCHOOL	9AM - 10AM	BREAKFAST / SHOWER	BREAKFAST / SHOWER
4PM - 5PM	HOMEWORK	TV / GAMING / SOCIAL MEDIA	HOMEWORK	TV / GAMING / SOCIAL MEDIA	HOMEWORK	10AM - 11AM	REVISION - ENGLISH	REVISION - SCIENCE
5PM - 6PM	DINNER	DINNER	DINNER	DINNER	DINNER	11AM - 1PM	SEEING FRIENDS / LUNCH	SPORT / LUNCH
6PM - 7PM	REVISION - GEOGRAPHY	HOMEWORK	REVISION - HISTORY	REVISION - FRENCH	REVISION - SCIENCE	1PM - 3PM	REVISION - MATHS	REVISION - FLASH CARDS
7PM - 8PM	REVISION - MATHS	REVISION - ENGLISH	FREE TIME	HOMEWORK	FREE TIME	3PM - 5PM	OUT WITH FAMILY	SPORT / TV / GAMING
8PM - 9PM	FREE TIME / CHILLED	FREE TIME / CHILLED	FREE TIME / CHILLED	FREE TIME / CHILLED	FREE TIME / CHILLED	6PM - 8PM	DINNER / FREE TIME	DINNER / FREE TIME

Stepping up to grab the keys to unlock your success

Create the Right Environment



Stepping up to grab the keys to unlock your success

Promote Healthy Habits



shutterstock.com · 1617695371

WEEKLY REVISION PLANNER

TIME	MONDAY	TUESDAY	WEDNESDAY	THURSDAY	FRIDAY	TIME	SATURDAY	SUNDAY
8:30AM - 4PM	SCHOOL	SCHOOL	SCHOOL	SCHOOL	SCHOOL	9AM - 10AM	BREAKFAST/SHOWER	BREAKFAST/SHOWER
4PM - 5PM	HOMEWORK	TV/GAMING/SOCIAL MEDIA	HOMEWORK	TV/GAMING/SOCIAL MEDIA	HOMEWORK	10AM - 11AM	REVISION - ENGLISH	REVISION - SCIENCE
5PM - 6PM	DINNER	DINNER	DINNER	DINNER	DINNER	11AM - 1PM	SEEING FRIENDS/LUNCH	SPORT/LUNCH
6PM - 7PM	REVISION - GEOGRAPHY	HOMEWORK	REVISION - HISTORY	REVISION - FRENCH	REVISION - SCIENCE	1PM - 3PM	REVISION - MATHS	REVISION - FLASH CARDS
7PM - 8PM	REVISION - MATHS	REVISION - ENGLISH	FREE TIME	HOMEWORK	FREE TIME	3PM - 5PM	OUT WITH FAMILY	SPORT/TV/GAMING
8PM - 9PM	FREE TIME/SHOWER	FREE TIME/SHOWER	FREE TIME/SHOWER	FREE TIME/SHOWER	FREE TIME/SHOWER	6PM - 8PM	DINNER/FREE TIME	DINNER/FREE TIME

Stepping up to grab the keys to unlock your success

Challenges!!!!!!



Stepping up to grab the keys to unlock your success



Effective, efficient and successful studying requires ...



Retrieval Practice	Spaced Practice	Effort	Support	Attendance	=	Success
Retrieval Practice	Spaced Practice	Effort	Support	Missing	=	Gaps in knowledge
Retrieval Practice	Spaced Practice	Effort	Missing	Attendance	=	Anxiety
Retrieval Practice	Spaced Practice	Missing	Support	Attendance	=	Under performance
Retrieval Practice	Missing	Effort	Support	Attendance	=	Cramming
Missing	Spaced Practice	Effort	Support	Attendance	=	Ineffective strategies

Created by Kate Jones @KateJones_Teach

Stepping up to grab the keys to unlock your success